

***2010 Camaro SS/V6
20104 Underbody Brace
Installation Instructions***



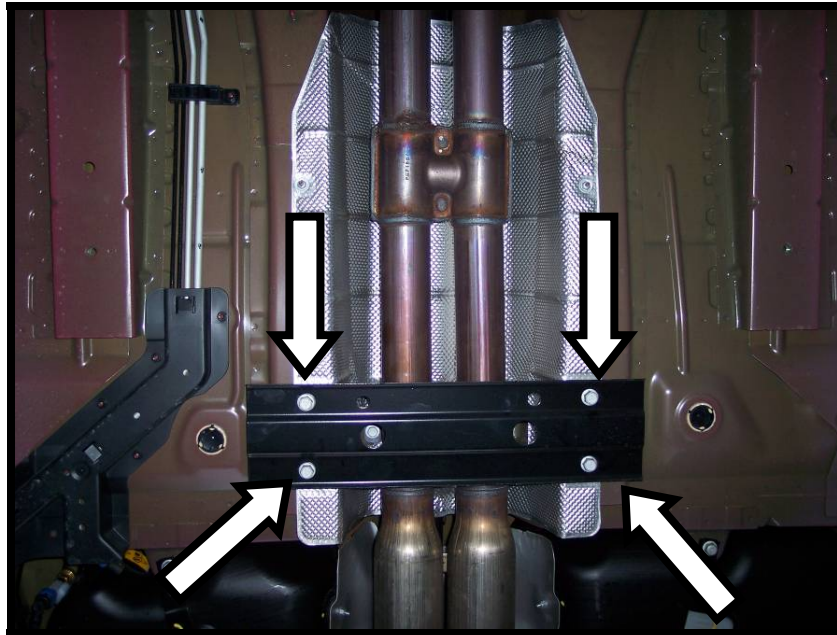
Thank you for your purchase of this Hotchkis Performance product. Your Underbody Brace set was designed with the performance and durability you've come to expect from Hotchkis Performance.

Note: Please read the entire installation instructions before starting. Having the right tools will ensure a smooth install process.

UNDER BODY BRACE INSTALLATION

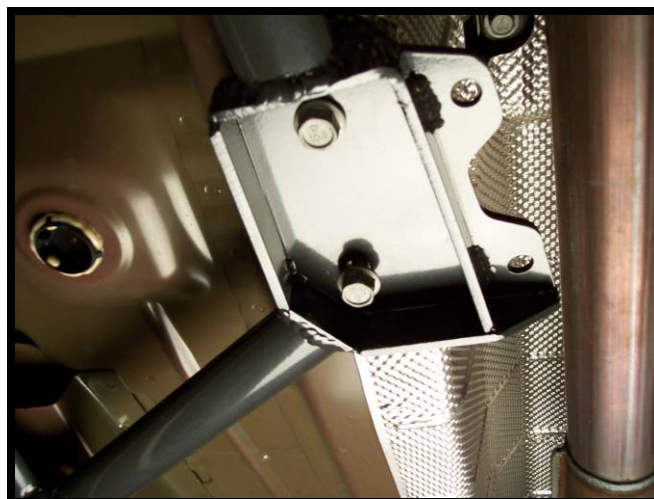
1. **Safely raise the vehicle and Unbolt the stock center plate.**

*NOTE: This is the only stock part that needs to be removed before installation. These bolts **will** be used in the installation.*

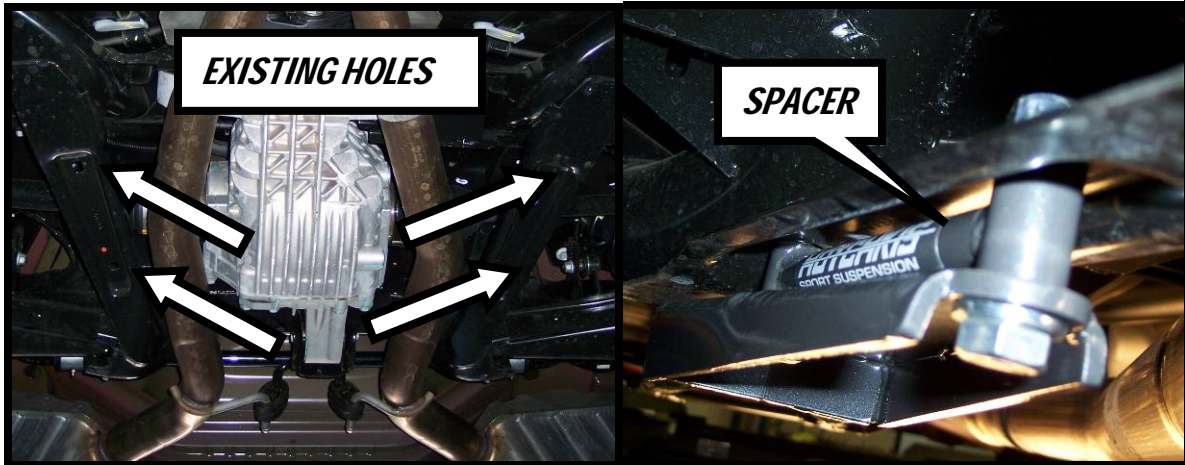


2. **Install either side of the under brace by first placing the center mounting bracket holes where the stock plate was removed from. Use the stock bolts and the included LARGE washers for this bracket.**

NOTE: Do not tighten these bolts yet. Just start the bolts in the holes so that the brace is supported. This will make it easier to bolt up the other brackets.



3. Now bolt the rear bracket onto the rear subframe using the holes that are already existing. Place the provided spacers between the frame and the brace as shown. Install the 12mm bolt from the bottom up and make sure to use the small washers on the head and nut ends.



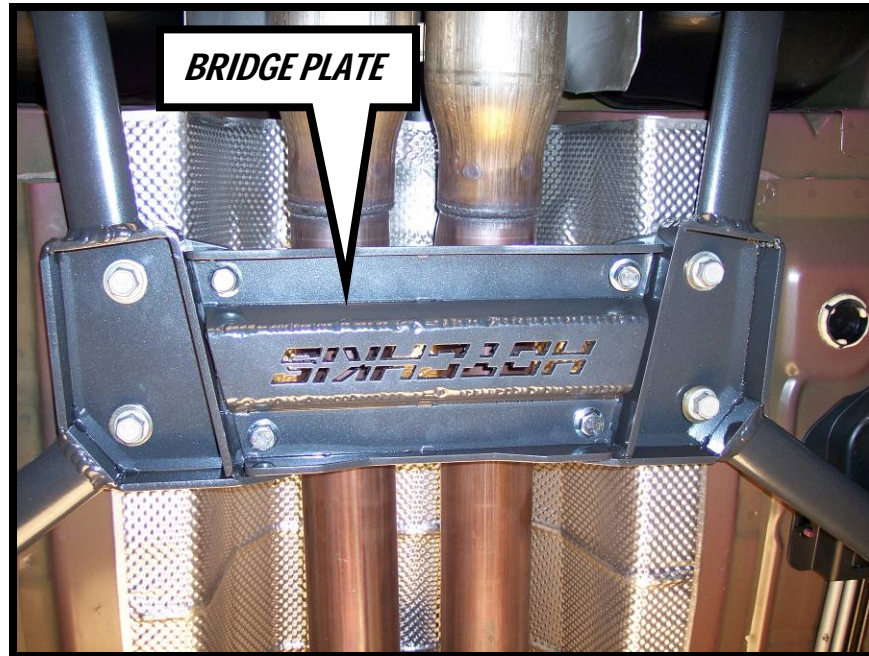
4. The Front bracket should now line up with its hole. Use the provided hex bolt and LARGE washer on that bracket.
NOTE: Remember, do not tighten any bolts yet. Only start each bolt.



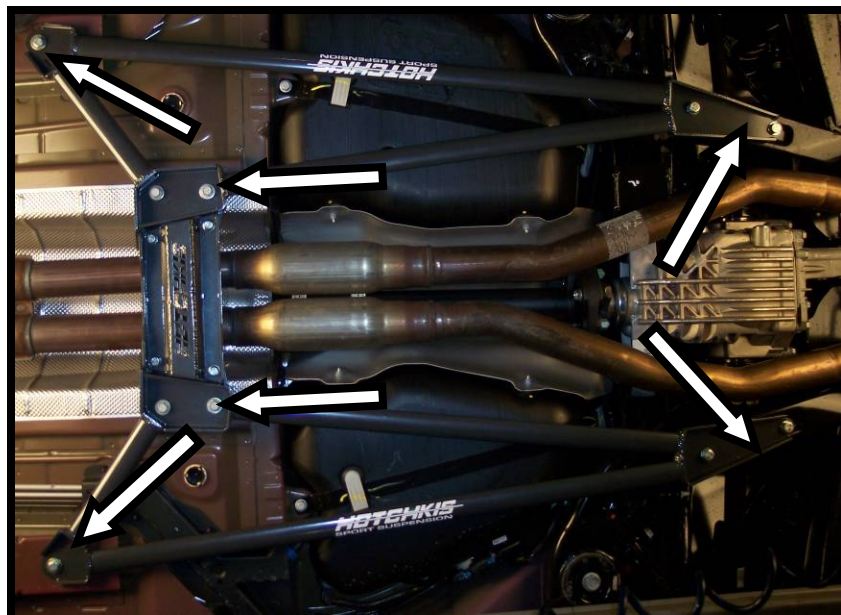
5. Now install the other side following the previous instructions.

6. Once both sides are in, bolt on the center bridge plate using the provided flange bolts. Install the 10mm flange bolt from the bottom up and make sure to use the lock washer on the nut side.

NOTE: Do not completely tighten the bolts yet.



7. Once everything has been bolted on, begin tightening the bolts on the outside main braces. Tighten M10 bolts to 50 ft-lbs and M12 bolts to 90 ft-lbs.



8. With the two main braces tight, now tighten the bridge plate and your under brace is ready for the road. Tighten bridge plate bolts to 50 ft-lbs.

